

Jacksons Creek biik wurrdha Regional Parklands

Expanding parklands for Melbourne's growing communities

The Suburban Parks Program is creating a more connected, immersive and shared open space network across Melbourne, where our waterways, trails and cool, green streets meet local pocket parks, urban parks and bushland.



Since 2018, the Victorian Government has committed over \$315 million through the Suburban Parks Program to create, connect, plan for and upgrade more than 6,500 hectares of open space across metropolitan Melbourne.

What is the Jacksons Creek biik wurrdha Regional Parklands project?

The Jacksons Creek biik wurrdha Regional Parklands project has created a Future Directions Plan to guide the expansion of over 1,000 hectares of parklands in Melbourne's north-west, from Sunbury to Diggers Rest. The Jacksons Creek biik wurrdha Regional Parklands Future Directions Plan 2022 was developed in collaboration with the Parklands Partnership Group.

The project will connect existing parks including:

- Holden Flora Reserve
- Jacksons Hill Reserve
- The Nook
- Apex Park
- Emu Bottom Wetlands
- Glade Reserve.

The parklands will include 1.9 kilometres of new walking and cycling paths to improve community access to the parklands. New trails, entrance signage, and safety infrastructure will be completed in 2025.

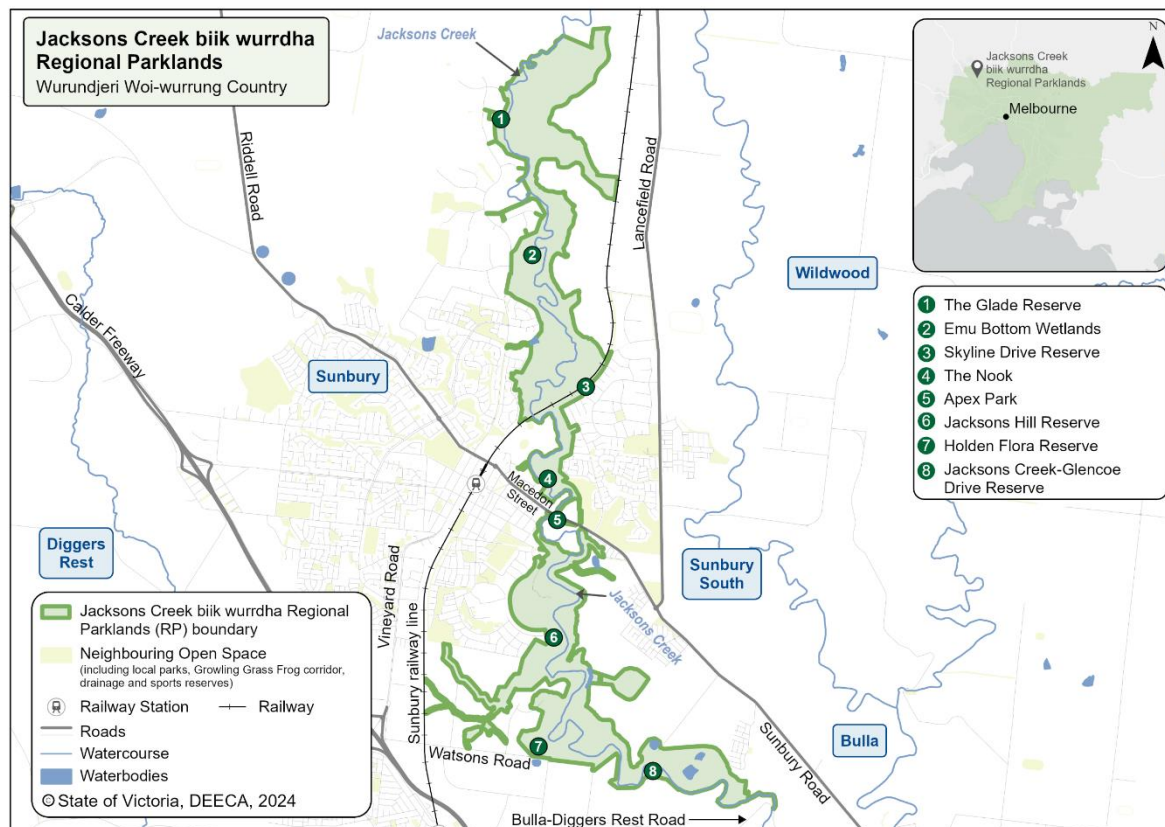
When will the parklands open?

Many areas of the Jacksons Creek biik wurrdha Regional Parklands are open for visitors to enjoy now. For more information visit the [Suburban Parks Program website](#).

Why create new parks?

- to improve community health and wellbeing
- to protect nature
- to strengthen cultural heritage
- to address climate change
- to attract jobs, investment, skilled people, and visitors to Melbourne's growing suburbs.





Who are the project partners and stakeholders?

The Department of Energy, Environment and Climate Action lead the Parkland Partnership Group which includes:

- Wurundjeri Woi-wurrung Cultural Heritage Aboriginal Corporation
- Hume City Council
- Melbourne Water
- Greater Western Water
- Parks Victoria

Location

The expanded parklands are located along Jacksons Creek from Diggers Rest to Sunbury, on the lands of the Wurundjeri Woi-Wurrung People.

Where can I find more information?

Updates are available on the [Suburban Parks Program website](https://suburban.parks@deeca.vic.gov.au).

You can email the project team at: suburban.parks@deeca.vic.gov.au.

Wurundjeri Woi-wurrung Elders have completed a Cultural Values Study. Its findings are integral to parkland planning and improved understanding and respect for Wurundjeri Woi-wurrung cultural values around Jacksons Creek.

© The State of Victoria Department of Energy, Environment and Climate Action 2025



This work is licensed under a Creative Commons Attribution 4.0 International licence. To view a copy of this licence, visit <http://creativecommons.org/licenses/by/4.0/>. ISBN 978-1-76105-468-6 (print). Disclaimer: This publication may be of assistance to you but the State of Victoria and its

employees do not guarantee that the publication is without flaw of any kind or is wholly appropriate for your particular purposes and therefore disclaims all liability for any error, loss or other consequence which may arise from you relying on any information in this publication. All photos © Parks Victoria.

Accessibility: If you would like to receive this publication in an alternative format, please email suburban.parks@deeca.vic.gov.au.

OFFICIAL

