

# marram baba Merri Creek Regional Parklands

Expanding parklands for Melbourne's growing communities

**The Suburban Parks Program is creating a more connected, immersive and shared open space network across Melbourne, where our waterways, trails and cool, green streets meet local pocket parks, urban parks and bushland.**

Since 2018, the Victorian Government has committed over \$315 million through the Suburban Parks Program to create, connect, plan for and upgrade more than 6,500 hectares of open space across metropolitan Melbourne.

### What is the marram baba Merri Creek Regional Parklands project?

The marram baba Merri Creek Regional Parklands project has created a Future Directions Plan to guide the expansion of over 2,700 hectares of parklands in Melbourne's north, from Campbellfield to Beveridge. The Future Directions Plan was developed in collaboration with the Parklands Partnership Group.

#### Why create new parks?

- to improve community health and wellbeing
- to protect nature
- to strengthen cultural heritage
- to address climate change
- to attract jobs, investment, skilled people, and visitors to Melbourne's growing suburbs.

The project will connect existing parks and open spaces including:

- galada tamboore in Campbellfield
- galgi ngarrk Grasslands at Craigieburn
- bababi marning Grasslands at Cooper Street
- Whittlesea Public Gardens in Lalor
- John Laffan Reserve in Donnybrook

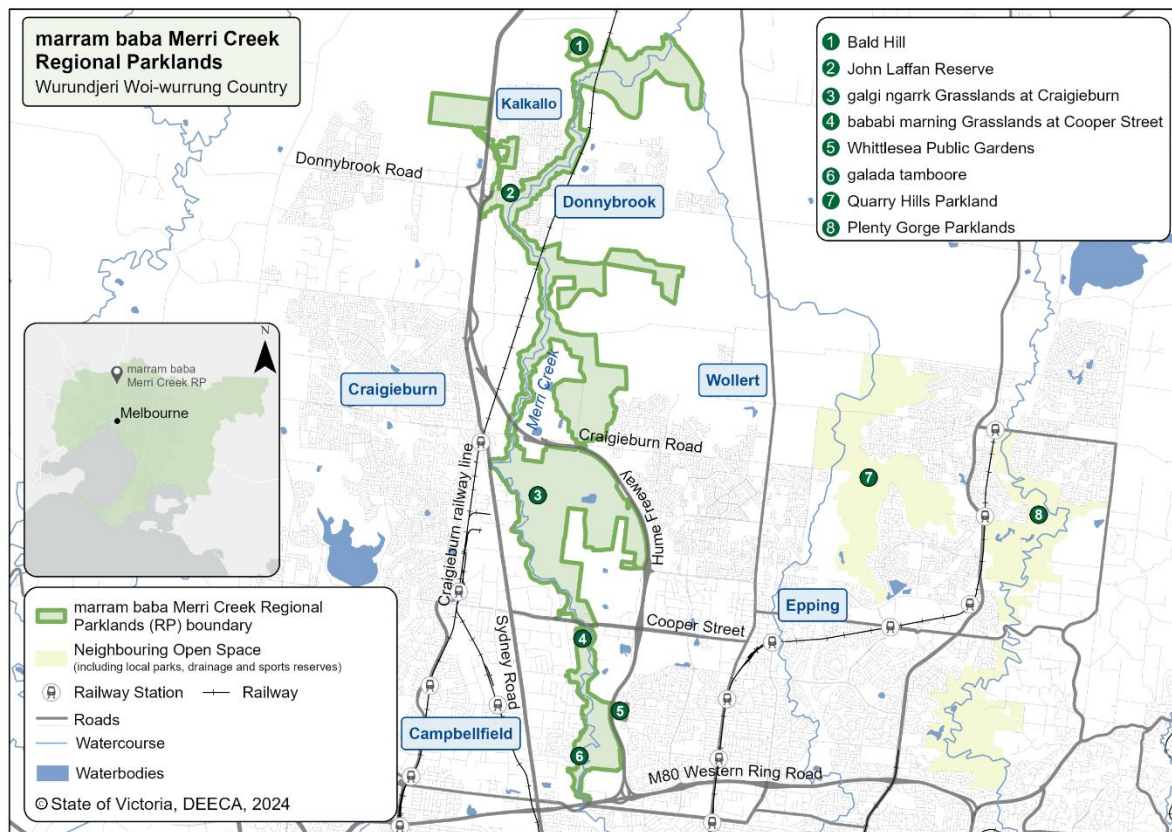
Initial works including a new path joining the southern Merri Creek footbridge crossing at galada tamboore, weed management and revegetation and information and wayfinding signage were completed in 2024.

### When will the parklands open?

Many areas of the marram baba Merri Creek Regional Parklands are open for visitors to enjoy now.

For more information, visit the [Suburban Parks Program website](#).





### Who are the project partners and stakeholders?

The Department of Energy, Environment and Climate Action lead project delivery and support the Parklands Partnership Group which includes:

- Wurundjeri Woi-wurrung Cultural Heritage Aboriginal Corporation
- Hume City Council
- City of Whittlesea
- Mitchell Shire Council
- Parks Victoria
- Melbourne Water
- Yarra Valley Water
- Merri Creek Management Committee

### Location

The expanded parklands are located along the Merri Creek between Campbellfield and Beveridge, on the lands of the Wurundjeri Woi-wurrung People.

### Where can I find more information?

Further information can be found on the [Suburban Parks Program website](https://www.suburbanparks.vic.gov.au/).

You can email the project team at: [suburban.parks@deeca.vic.gov.au](mailto:suburban.parks@deeca.vic.gov.au)

**The Wurundjeri Woi-Wurrung Cultural Heritage Aboriginal Corporation developed a cultural values statement outlining important values, which informed the Future Directions Plan.**

© The State of Victoria Department of Energy, Environment and Climate Action 2025



This work is licensed under a Creative Commons Attribution 4.0 International licence. To view a copy of this licence, visit <http://creativecommons.org/licenses/by/4.0/>. ISBN 978-1-76105-468-6 (print). Disclaimer: This publication may be of assistance to you but the State of Victoria and its

employees do not guarantee that the publication is without flaw of any kind or is wholly appropriate for your particular purposes and therefore disclaims all liability for any error, loss or other consequence which may arise from you relying on any information in this publication. All photos © Parks Victoria.

**Accessibility:** If you would like to receive this publication in an alternative format, please email [suburban.parks@deeca.vic.gov.au](mailto:suburban.parks@deeca.vic.gov.au).

