

Suburban Parks Program

Sandbelt Parklands

Creating new parklands for Melbourne's growing communities

The Suburban Parks Program is creating a more connected, immersive and shared open space network across Melbourne, where our waterways, trails and cool, green streets meet local pocket parks, urban parks and bushland.



Since 2018, the Victorian Government has committed over \$315 million through the Suburban Parks Program to create, connect, plan for and upgrade more than 6,500 hectares of open space across metropolitan Melbourne.

What is the Sandbelt Parklands project?

The Sandbelt Parklands is an ambitious project to create a 355-hectare chain of parks from Moorabbin to Dingley Village in Melbourne's south-east. Creation of the new parklands in will provide green, open spaces for these communities to enjoy.

Why create new parks?

- to improve community health and wellbeing
- to protect nature
- to strengthen cultural heritage
- to address climate change
- to attract jobs, investment, skilled people, and visitors to Melbourne's growing suburbs.

The Department of Energy, Environment and Climate Action (DEECA) has acquired 86 hectares of former landfill sites in Clayton, Dingley and Heatherton to connect to existing parks. DEECA is managing these sites with experts to make them safe for future works and public use.

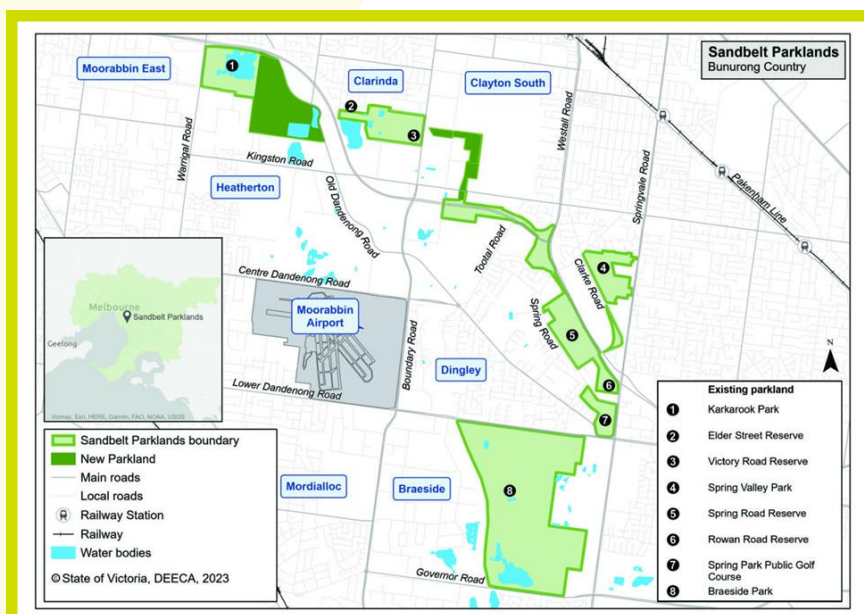
Kingston City Council, as a project partner, is starting to plan for the parks at the sites, with initial proposals including walking and bike trails, adventure play, and conservation areas.

When will the new parklands open?

Transforming former landfill sites into parklands is complex and will take several years. DEECA is currently managing the former landfill sites by extracting gas (which powers homes) and treating toxic contaminants including leachate.

Creation of the new parklands will include multiple stages of planning and consultation that will inform future investment.

OFFICIAL



Who are the project partners and stakeholders?

DEECA is collaborating and working with:

- Bunurong Land Council Aboriginal Corporation
- Parks Victoria
- Kingston City Council
- Environment Protection Authority
- Department of Transport and Planning

Location

The chain of parks will stretch from Warrigal Road in Moorabbin to Braeside Park in Dingley Village, 20-30 kilometres south-east of Melbourne's CBD on Bunurong Country.

Where can I find more information?

You can find further information on the [Kingston City Council website](#) and the [Suburban Parks Program website](#).

You can email the project team at: sandbeltparklands@deeca.vic.gov.au

Commented [DW1]: Not sure its called collaborating with EPA?

Interested community members can contribute to the park's plan and design as the project progresses, and can look forward to exploring the Sandbelt Parklands as it emerges over the coming years.

© The State of Victoria Department of Energy, Environment and Climate Action 2025

This work is licensed under a Creative Commons Attribution 4.0 International licence. To view a copy of this licence, visit <http://creativecommons.org/licenses/by/4.0/>. ISBN 978-1-76105-468-6 (print). Disclaimer: This publication may be of assistance to you but the State of Victoria and its employees do not guarantee that the publication is without flaw of any kind or is wholly appropriate for your particular purposes and therefore disclaims all liability for any error, loss or other consequence which may arise from you relying on any information in this publication. All photos © Parks Victoria.

Accessibility: If you would like to receive this publication in an alternative format, please email metro.parkland@deeca.vic.gov.au.

OFFICIAL

