

Jacksons Creek biik wurrdha Regional Parklands

SUBURBAN PARKS PROGRAM



Sunbury will be home to new regional parklands spanning over 1,000 hectares and 26 kilometres of spectacular Jacksons Creek biik wurrdha valley

The Parklands includes and links much loved existing parks including Emu Bottom Wetlands, The Nook, Skyline Drive Reserve, Apex Park, Jacksons Hill Reserve, Holden Flora Reserve and the former Sunbury Music Festival site.

Traditional Owners

Jacksons Creek flows across Wurundjeri Woi-wurrung land and is known as 'biik wurrdha' meaning 'land of many' in Wurundjeri Woi-wurrung language.

The Wurundjeri Woi-wurrung people have been the owners and custodians of the land for thousands of years. The Elders seek the protection of this culturally significant landscape for future generations.

A Cultural Values Study prepared by the Wurundjeri Woi-wurrung set out the spiritual, archaeological, historical, ecological and living connections that the biik wurrdha Cultural Landscape provides for the traditional custodians, and this has been used by parkland partners as the basis for parkland planning.

Jacksons Creek biik wurrdha Regional Parklands

The Jacksons Creek biik wurrdha Regional Parklands Plan 2022 sets out the vision, principles and actions for progressive parklands establishment, expansion and management to be achieved by 2040.

Jacksons Creek biik wurrdha Regional Parklands will be an inspiring natural and cultural landscape valued for the ecological, spiritual, historical and living connections it provides to the Wurundjeri Woi-wurrung community and visitors from Sunbury and beyond.

The Parkland Plan recognises the rights and values of the Wurundjeri Woi-wurrung people in the planning and management of the Parklands and responds to the critical need to protect and enhance biodiversity and cultural heritage, mitigate climate change, and contribute to improved community health and wellbeing.

The Jacksons Creek biik wurrdha Regional Parklands are home to stunning views and natural beauty helping to draw more people outdoors to connect to nature. Visitors will enjoy more trails for exercising, spaces to rest and relax and areas to appreciate the natural and cultural heritage of the parklands.

The Jacksons Creek biik wurrdha Regional Parklands will help to deliver Victoria's vision of a quality open space network as set out in the Open Space for Everyone Strategy 2021 and is an initiative of the Suburban Parks Program.

Biodiversity

A key driver for biodiversity protection within the parklands is the requirement to protect conservation areas for Nature Conservation and Growling Grass Frog set out under the Commonwealth's Environment Protection and Biodiversity Conservation Act 1999.

The parklands play a vital role as a wildlife corridor for a wide range of species. This will become increasingly important as Sunbury doubles its population by 2040 and surrounding development reduces adjacent habitat area.

Culture, Heritage and Identity

The biik wurrdha Cultural Landscape will be a space for the Wurundjeri Woi-wurrung to care for the Sunbury Earth Rings, to practice ecological cultural land management works, undertake archaeological knowledge recording, walk Country, practice culture and ceremony, and share stories relating to the journey of their ancestors within the landscape.

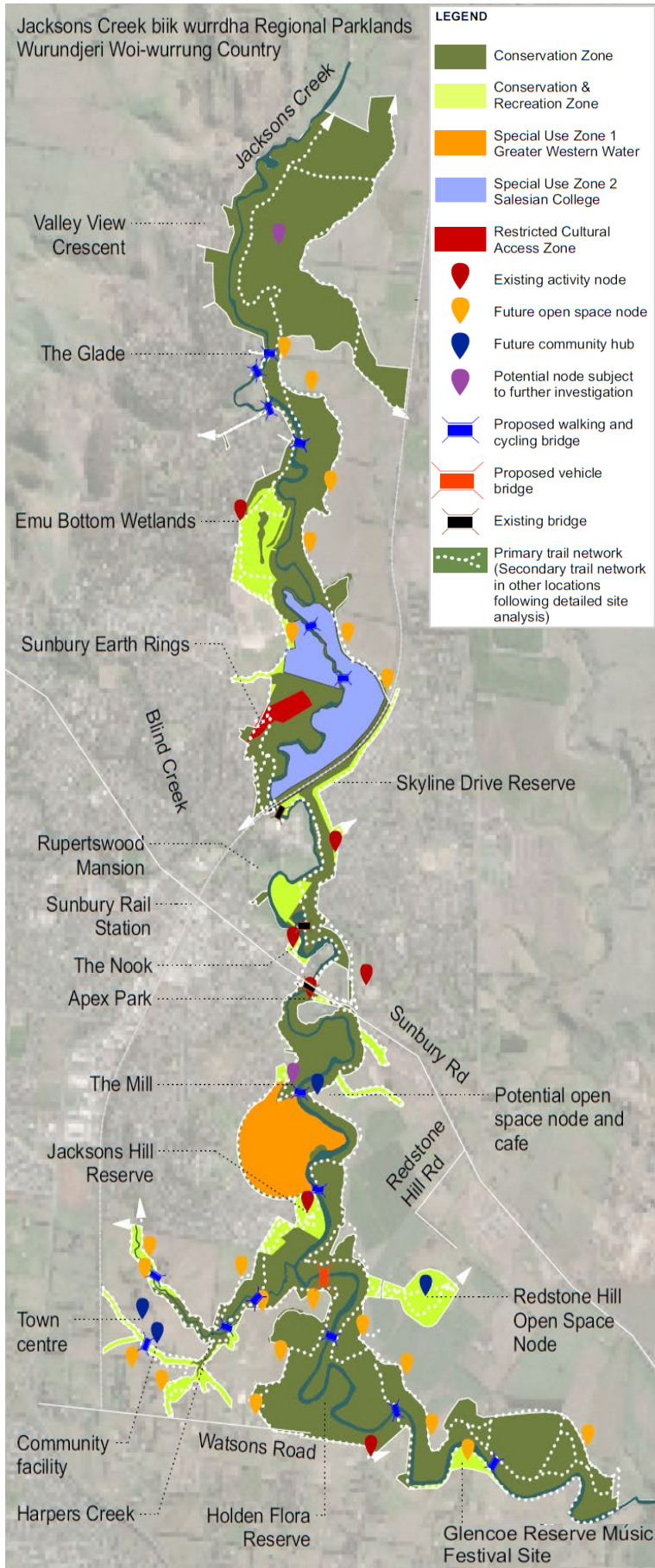
European settlers arrived in 1835 with pastoral interests and Redstone Hill is the most likely location of the signing of 'Batman's Treaty'.

The parklands area has been the home of previous volunteer military encampments, Caloola former Sunbury Mental Hospital at Jacksons Hill, and the renowned Sunbury Music Festival. It is adjacent to this historic Rupertswood Mansion, Emu Bottom Homestead and popular Sunbury wineries.

View the Plan <https://engage.vic.gov.au/JacksonsCkParklands>

Jacksons Creek biik wurrdha Regional Parklands

SUBURBAN PARKS PROGRAM



Climate Change

The parklands will be managed to respond to climate change impacts and extreme weather event including storms, bushfires, and heat waves.

In 2021, canopy covered 32% of the parklands. New canopy plantings will provide shade along paths and visitor areas. Canopy planting will be limited to avoid priority grassland and growling grass frog areas due to different ecological habitat requirements. Vegetation will be managed to minimise fire risk.

Visitor Experience and Healthy Communities

The spectacular and diverse landscapes, topography and geology of the parklands provide many scenic opportunities for visitors to enjoy.

The parklands provide access to high quality local experiences for activities such as walking and picnicking. Existing park areas, especially The Nook and Emu Bottom Wetlands are much loved by the community. Community feedback strongly supports more opportunities to enjoy nature.

As the parklands expand, trails, signage and viewing areas will be created for visitor enjoyment while supporting natural and cultural values, and safe movement.

Supporting volunteer groups and activities such as walking tours, park runs, and junior rangers are important ways to help care for the parklands and draw from the wealth of local knowledge.

Land Management

Approximately 30 percent of the parklands area is currently managed by the Jacksons Creek biik wurrdha Regional Parklands Partnership Group.

The partners include Parks Victoria, Melbourne Water, Hume City Council, Greater Western Water, Department of Environment, Land, Water and Planning, and the Wurundjeri Woi-wurrung Cultural Heritage Aboriginal Corporation.

The remaining 70 percent of the parklands is currently privately owned and will become parklands as part of the development approval process. Some parcels will be transferred within 3-5 years, and some will take 5-20 years. Some land may remain in private ownership for longer where the use is consistent with Precinct Structure Plans and the Parklands Plan including provision for publicly accessible trails, scenic views, and connections.

The Partnership Group supports Traditional Owner self-determination and as such supports the goal of the Wurundjeri Woi-wurrung people for future management of the parklands.

Contact Us

Email jacksonsck.biikwurrdha@delwp.vic.gov.au