

## Clyde Regional Park

Creating a new park for Melbourne's growing communities

**The Suburban Parks Program is creating a more connected, immersive and shared open space network across Melbourne, where our waterways, trails and cool, green streets meet local pocket parks, urban parks and bushland.**

Since 2018, the Victorian Government has committed over \$315 million through the Suburban Parks Program to create, connect, plan for and upgrade more than 6,500 hectares of open space across metropolitan Melbourne.

### What is the Clyde Regional Park project?

The Clyde Regional Park will be one of 3 large new regional parks in Melbourne. The new 120-hectare park will be located in Melbourne's south-eastern suburbs and will provide green and open space for new communities. The new park will be located alongside the future Clyde Park Sports Precinct and Melbourne Water drainage basin.

The Clyde Regional Park area is adjacent to existing habitats of endangered species such as the growling grass frog, dwarf galaxias (a species of fish), and migratory birds. The new open space will create opportunities to protect biodiversity in the area.

Parks Victoria is developing the masterplan for the park, informed by the 2022 Strategic Directions Plan, and stakeholder and community consultation. The masterplan will guide the creation of the new Clyde Regional Park.

### When will the park open?

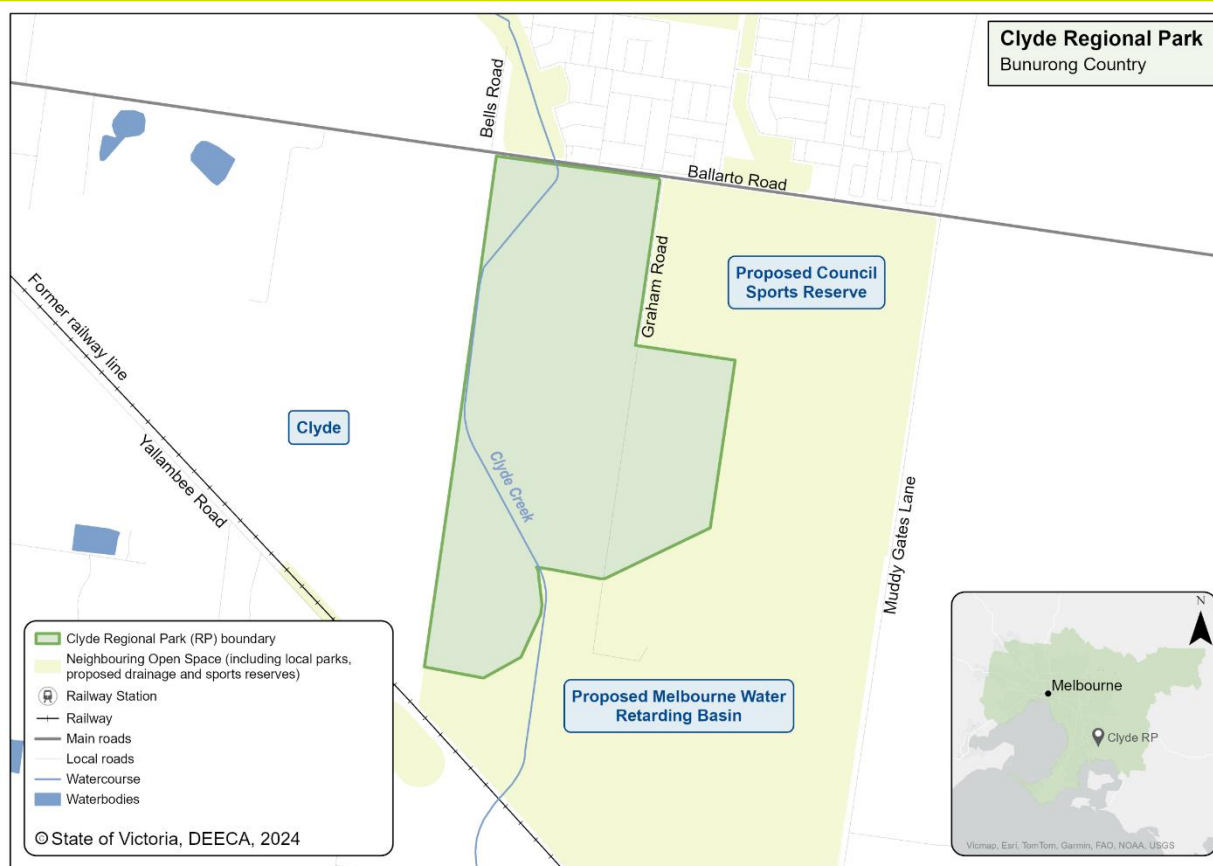
There is currently no public access to the future site of Clyde Regional Park. The Victorian Government has acquired private land for the park, and Parks Victoria has started clean-up works by removing structures such as sheds, and installing secure perimeter fencing.

Creation of the park will include multiple stages of planning and consultation that will inform future investment.

### Why create new parks?

- to improve community health and wellbeing
- to protect nature
- to strengthen cultural heritage
- to address climate change
- to attract jobs, investment, skilled people, and visitors to Melbourne's growing suburbs.





## Who are the project partners and stakeholders?

The Department of Energy, Environment and Climate Action is working closely with Parks Victoria to deliver the project in conjunction with:

- Bunurong Land Council Aboriginal Corporation
- City of Casey Council
- Melbourne Water

## Location

The new park is located about 40 kilometres south-east of Melbourne's CBD on Bunurong Country.

## Where can I find more information?

Further information can be found on the [Parks Victoria website](#).

You can email the project team at: [engage@parks.vic.gov.au](mailto:engage@parks.vic.gov.au)

**Interested community members will have more opportunities to contribute to the park's plan and design, and can look forward to exploring the new Clyde Regional Park as it emerges in coming years.**

© The State of Victoria Department of Energy, Environment and Climate Action 2025



This work is licensed under a Creative Commons Attribution 4.0 International licence. To view a copy of this licence, visit <http://creativecommons.org/licenses/by/4.0/>. ISBN 978-1-76105-468-6 (print). Disclaimer: This publication may be of assistance to you but the State of Victoria and its employees do not guarantee that the publication is without flaw of any kind or is wholly appropriate for your particular purposes and therefore disclaims all liability for any error, loss or other consequence which may arise from you relying on any information in this publication. All photos © Parks Victoria.

**Accessibility:** If you would like to receive this publication in an alternative format, please email [suburban.parks@deeca.vic.gov.au](mailto:suburban.parks@deeca.vic.gov.au).



OFFICIAL