

Suburban Parks Program

Wattle Park

Improving parks for Melbourne's growing communities

The Suburban Parks Program is creating a more connected, immersive and shared open space network across Melbourne, where our waterways, trails and cool, green streets meet local pocket parks, urban parks and bushland.



Since 2018, the Victorian Government has committed over \$315 million through the Suburban Parks Program to create, connect, plan for and upgrade more than 6,500 hectares of open space across metropolitan Melbourne.

What is the Wattle Park project?

The Wattle Park project has delivered significant upgrades to facilities at Wattle Park in Burwood, on the land of the Wurundjeri Woi-wurrung People.

Parks Victoria has installed a new all-abilities playscape, 3.2km walking and running track, and new sensory garden for people to enjoy.

The remaining works of a new ceremonial space, and replacement of restored heritage trams, will be completed in 2025.

When will the project be completed?

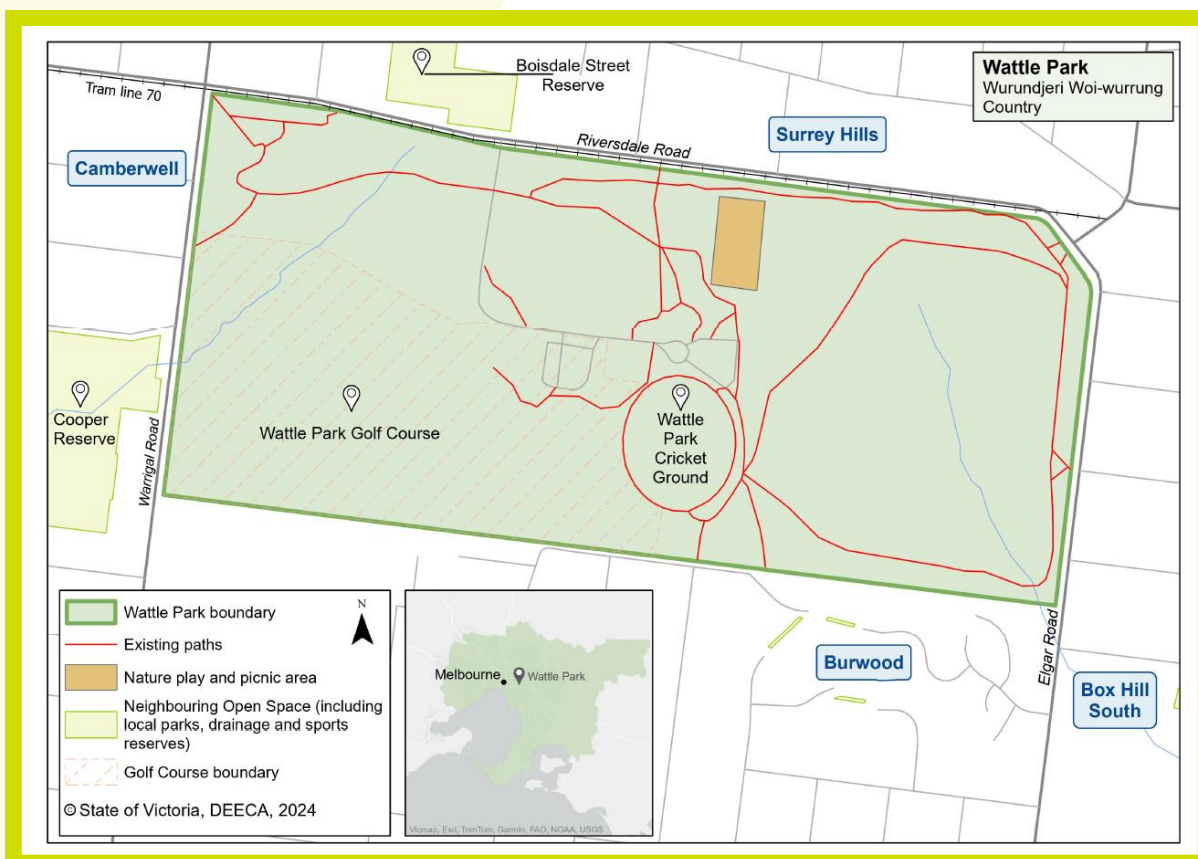
Visitors can enjoy the upgraded Wattle Park facilities now.

The new playscape, upgraded picnic area and the walking and running track are ready for the community to enjoy, and vehicle access at Monsborough Drive has also been improved.

Why upgrade parks?

- to improve community health and wellbeing
- to protect nature
- to strengthen cultural heritage
- to address climate change
- to attract jobs, investment, skilled people, and visitors to Melbourne's growing suburbs.





Who are the project partners and stakeholders?

Parks Victoria delivered the project, with support from the Department of Energy, Environment and Climate Action. Parks Victoria delivered the project in collaboration with:

- Wurundjeri Woi-wurrung Cultural Heritage Aboriginal Corporation
- Whitehorse City Council
- Heritage Victoria

Location

Wattle Park is in Burwood, about 15 kilometres east of Melbourne's CBD on the land of the Wurundjeri Woi-wurrung People.

Where can I find more information?

Further information can be found on the [Parks Victoria website](https://parks.vic.gov.au).

You can email the project team at: engage@parks.vic.gov.au

Members of the public and key stakeholders provided feedback to inform the new park design and infrastructure in 2020 and 2021.

© The State of Victoria Department of Energy, Environment and Climate Action 2025



This work is licensed under a Creative Commons Attribution 4.0 International licence. To view a copy of this licence, visit <http://creativecommons.org/licenses/by/4.0/>. ISBN 978-1-76105-468-6 (print). Disclaimer: This publication may be of assistance to you but the State of Victoria and its

employees do not guarantee that the publication is without flaw of any kind or is wholly appropriate for your particular purposes and therefore disclaims all liability for any error, loss or other consequence which may arise from you relying on any information in this publication. All photos © Parks Victoria.

Accessibility: If you would like to receive this publication in an alternative format, please email suburban.parks@deeca.vic.gov.au.

OFFICIAL

