



Campfires can easily escape and start a bushfire

- Understand the campfire and barbecue rules before you visit our forests and parks.
- Think about using fuels other than wood for cooking while camping.
- Your campfire is your responsibility. You are legally responsible for ensuring that it is safe, does not escape, and is completely put out before you leave.

Information sources

- Check the long range weather forecast before you leave via bom.gov.au
- Find out about Total Fire Bans and Fire Danger Ratings via:
 - VicEmergency Hotline on 1800 226 226
 - emergency.vic.gov.au
 - Vic Emergency App

© The State of Victoria Department of Environment, Land, Water and Planning 2022



This work is licensed under a Creative Commons Attribution 4.0 Australia licence. You are free to re-use the work under that licence, on the condition that you credit the State of Victoria as author. The licence does not apply to any images, photographs or branding, including the Victorian Coat of Arms, the Victorian Government logo and the Department of Environment, Land, Water and Planning logo. To view a copy of this licence, visit <http://creativecommons.org/licenses/by/4.0/>

ISBN 978-1-76136-159-3 (Print)

978-1-76136-160-9 (pdf/online/MS word)

Accessibility

If you would like to receive this publication in an alternative format, please telephone DELWP Customer Service Centre 136186, email customer.service@delwp.vic.gov.au, via the National Relay Service on 133 677 www.relayservice.com.au. This document is also available on the internet at www.conservationregulator.vic.gov.au.

Disclaimer

This publication may be of assistance to you but the State of Victoria and its employees do not guarantee that the publication is without flaw of any kind or is wholly appropriate for your particular purposes and therefore disclaims all liability for any error, loss or other consequence which may arise from you relying on any information in this publication.

CS615NOV22

To report suspicious or illegal activity call DELWP on 136 186

To contact Parks Victoria call 131 963

vic.gov.au/unattended-campfires



Can I? Can't I?

Campfires and Barbecues



Before you go

- Pack a **bucket**.
- Make sure you have access to **water**.
- Check the **weather and Fire Danger Ratings**.
- Find out if there is a **Total Fire Ban** where you plan to visit.

Arriving at the campsite

Building your campfire

- Use the **designated fireplace**. When in National Park areas, campfires are only permitted in designated fireplaces.
- If there is no fireplace, **dig a hole** at least 30cm deep.* Please note that moving rocks can affect habitat. However, you can line your firepit with rocks if this is needed to make it safe.*
- Make sure there is nothing that could catch fire within **3 metres** of a campfire or designated **fireplace** (including above and around it).
- Keep it small. Your fire (including the logs/branches within it) must be **less than 1 square metre** in size.

*(not allowed in National Parks)

Using portable barbeques/stoves[^]

- You can use barbeque/stove appliances that are **designed and manufactured** for that purpose.
- The barbeque/stove must be **stable** (not at risk of tipping over).
- Make sure there is nothing that could catch fire within **1.5 metres** of your barbeque (including above and around it).[†]

[^]Allowed in some National Park areas – contact Parks Victoria to confirm.

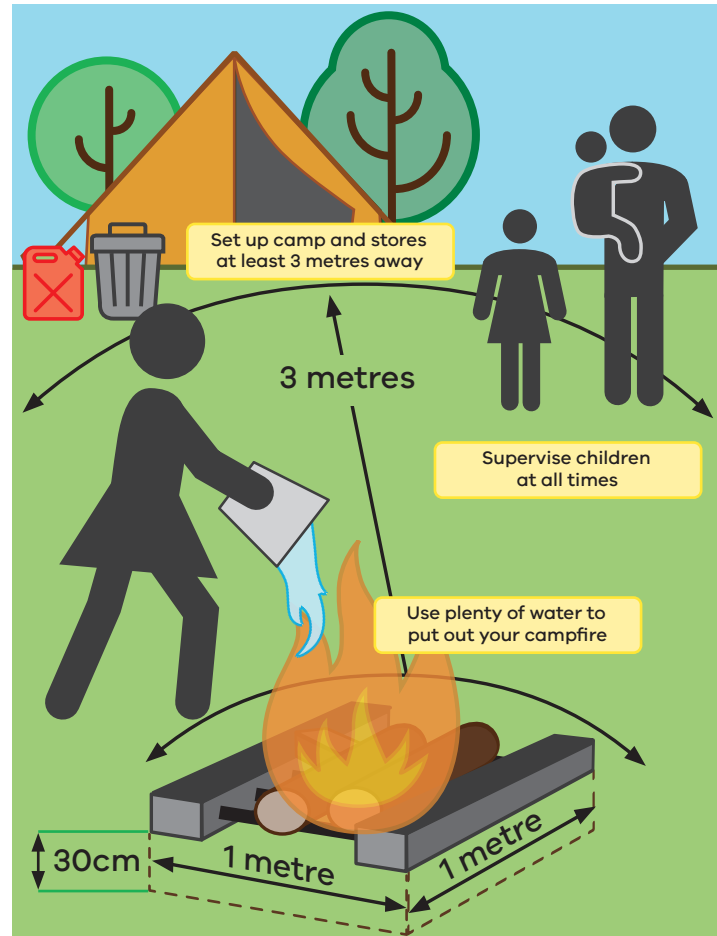
[†]This also applies to any generators you have running at your campsite.

While you are camping

- A responsible adult **must watch** the campfire or barbeque at all times.
- **If it's hot or windy, do not light** a campfire or barbeque.
- If you leave the campsite for any reason, **put out your campfire - even if you plan to come back**.

Leaving the campsite

- Fill up your **bucket with water** and use it to put out your campfire.
- When the **ashes are cool to touch** it is safe to leave.
- **Dirt is not enough** – fires can keep burning underground for days in the right conditions.



*This image relates to general use, not on a day of Total Fire Ban



Do not put glass, aluminium, plastic, rubbish or food scraps into your campfire. Please take these home with you.



Leaving these items at your campsite is littering and subject to on-the-spot fines.

Total Fire Ban days

Total Fire Ban days = no campfires, including the use of wood, briquettes, heat beads.



- Find out if a Total Fire Ban is in place.
- Call the Vic Emergency Hotline on **1800 226 226**
- Download the **Vic Emergency App** or visit **emergency.vic.gov.au**

Barbeques on Total Fire Ban days

You can use a permanent gas or electric barbeque on a total fire ban day if it is:

- Built of stone, metal concrete, or another **non-flammable material**.
- Designed and manufactured **only for meal preparation** (including portable barbeques).
- Always in a **stable position** when in use.

You must:

- Only use it to cook a meal.
- Make sure there is nothing that can catch fire within **1.5 metres** of the barbeque.
- **Supervise** the barbeque at all times and make sure you can put it out if necessary.
- Have a hose connected to a water supply or at least **10L of water**.
- Ensure the barbeque is **completely out** before you leave.

- **Unattended** (unwatched) campfires are one of the biggest potential causes of bushfires.
- If we find an unattended campfire or barbeque, we will put it out.
- If we find a campfire or barbeque that is still alight or not completely extinguished, you could be **fined or taken to court**.
- Every person has a **legislative duty** to prevent the spread of a fire.